


Enjoy Your **Cool** Life !



www.deepcool.com

 Follow us @DEEPCOOL

©2017 Beijing Deepcool Industries Co.,Ltd. All rights reserved . All trademarks are registered to their respective owners.
Product pictures for reference only. All product designs and specifications are subject to improve quality and performance without notice.



About us

Deepcool was founded with the mission of providing the best performance and humanized thermal solutions for worldwide customers. Established in 1996, headquartered in Beijing, factory was established in Shen Zhen, Deepcool originally produced desktop, server coolers and cooling accessories. With the rapid development of personal computers, Deepcool expanded the business into AIO liquid cooling products, chassis, power supplies.

Deepcool has built up its distribution network in about seventy countries all over the globe, by which end-users can purchase Deepcool products online or in their nearest local stores. With more and more media exposure and publication, such as awards from renowned websites and magazines like Tom's Hardware, Techpowerup, TweakTown, HEXUS, 3Dnews, Guru3d, CHIP, etc., Deepcool now enjoys a good reputation among computer daily users, gamers, overclockers and modders.

We will always spare no effort to maintain customer satisfaction by serving our customer's ever-changing thermal needs and providing the quickest and most comprehensive service available. As our slogan goes, we wish you all "Enjoy your cool life!" Why Named Deepcool Ever since the stunning victory of Deep Blue, a program running on an IBM supercomputer, over Gary Kasparov, then world chess champion, in 1997, it has been clear that computers would be the most powerful tool of human being. At that time, we started our computer cooling business. We hoped our products could be as great as Deep Blue. With that in mind came the name Deepcool.

CONTENTS

[CPU Liquid Coolers](#)

[CPU Air Coolers](#)

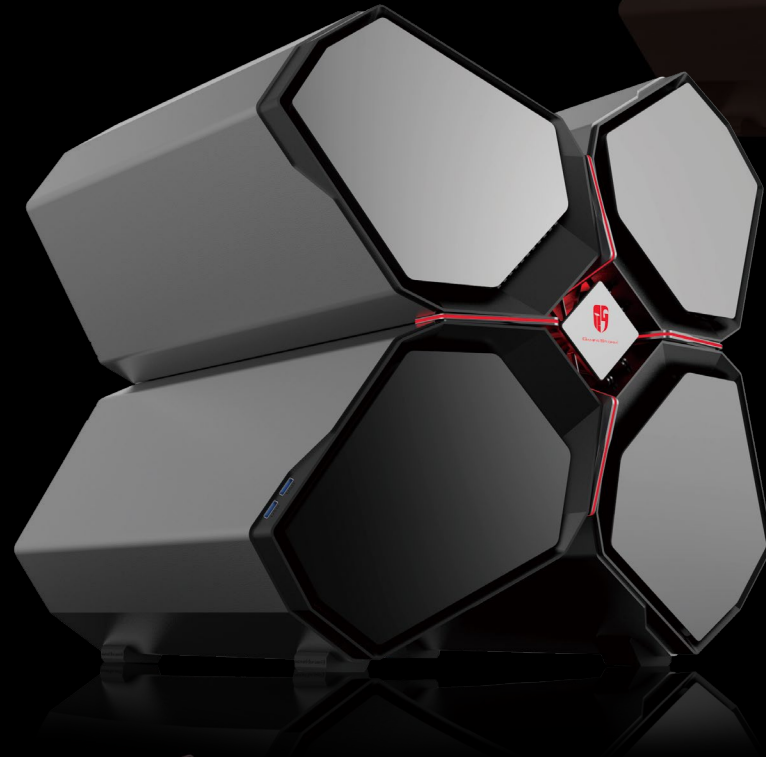
[Cases](#)

[Power Supply Units](#)

[Laptop Coolers](#)

[Case Fan](#)

[Accessory](#)



QUADSTELLAR

ATX PC case with an integral structure using optimized alloy.
4 individual cabins for GPU, motherboard, power supply and hard disk drive.
Temperature sensors inside the case enable the automatic air intake system to adjust the air flow for a stable cooling performance.
Separate cabins for ultimate cooling performance and a cool hi-tech appearance.
3.5" Hard Drive Bays: 9 / 2.5" Drive Bays: 12.
Dimensions: 523mm*485mm*485mm.



NEW ARK 90

AM4 Ready, ATX Computer Case.
Encompassing Liquid Cooling System with RGB Lighting Effects.
A sleek high end PC case with top and side panels completely made of optimized tempered glass, three 140mm fans are also pre-installed.
Pre-installed Captain 280EX AIO liquid cooling system incorporating an exposed liquid reservoir and a specially designed flow indicator.
RGB lighting system allows simultaneous color changing of the lighting on different parts including flow indicator, water block, PSU shroud, and LED strips.



EARLKASE LIQUID

AM4 Ready, ATX Computer Case.
Full size tempered glass side panel.
Pre-installed Captain 140EX AIO liquid cooling system.
Integrated RGB lighting system: flow indicator, water block, and LED strip.
Specially designed flow indicator makes the flow rate of the coolant visible.



BARONKASE LIQUID

AM4 Ready, Micro-ATX body that supports ATX motherboards
Ideal solution for a portable VR-ready PC, a metal handle on top for moveability.
Integrated Captain 120EX All-In-One liquid cooler.
The integrated RGB lighting system allows simultaneous color changing of different parts including flow indicator, water block, SSD shroud and LED strip.
One illuminated 2.5" drive bay is vertically orientated for better visual enjoyment.



MF120GT

- Double V shape RGB lighting
- RGB lighting support through the GS control app
- Excellent vibration damping capability
- The aluminium fan frame is detachable for easy cleaning
- PWM over the range 500-2200 RPM, Fluid Dynamic Bearing used in the fans



MF120

- Parallel RGB lighting
- Frameless design makes the rotation of the exposed blades more visible
- RGB lighting support through the GS control app
- Excellent vibration damping capability
- PWM over the range 500-2200 RPM, Fluid Dynamic Bearing used in the fans



CAPTAIN EX RGB SERIES

AM4 ready, featuring latest RGB variable lighting system. Unique double tunnel structure with its split single-track liquid flow. Upgraded high-density micro-channels for more efficient heat dissipation. Three-phase induction motor built into the powerful closed impeller pump. Patented visual external circulation system. Silent TF 120 double-blade fan, Fluid Dynamic Bearing.





CAPTAIN 360EX

- High-density water microchannel,10% more efficient
- Amazing glass visual external-circulation system
- Updated tooling free installation solution
- Unique silent TF 120 double-blade fan
- Upgraded anti-explosion rubber tube

Intel: LGA2011-v3/2011/1366/1156/1155/1151/1150
AMD: AM4/FM2+/FM2/FM1/AM3+/AM3/AM2+/AM2



CAPTAIN 240EX

- High-density water microchannel,10% more efficient
- Amazing glass visual external-circulation system
- Updated tooling free installation solution
- Unique silent TF 120 double-blade fan
- Upgraded anti-explosion rubber tube

Intel: LGA2011-v3/2011/1366/1156/1155/1151/1150
AMD: AM4/FM2+/FM2/FM1/AM3+/AM3/AM2+/AM2



CAPTAIN 120EX

- High-density water microchannel,10% more efficient
- Amazing glass visual external-circulation system
- Updated tooling free installation solution
- Unique silent TF 120 double-blade fan
- Upgraded anti-explosion rubber tube

Intel: LGA2011-v3/2011/1366/1156/1155/1151/1150
AMD: AM4/FM2+/FM2/FM1/AM3+/AM3/AM2+/AM2



CAPTAIN 240EX WHITE

- High-density water microchannel,10% more efficient
- Amazing glass visual external-circulation system
- Updated tooling free installation solution
- Unique silent TF 120 double-blade fan
- Upgraded anti-explosion rubber tube

Intel: LGA2011-v3/2011/1366/1156/1155/1151/1150
AMD: AM4/FM2+/FM2/FM1/AM3+/AM3/AM2+/AM2



CAPTAIN 120EX WHITE

- High-density water microchannel,10% more efficient
- Amazing glass visual external-circulation system
- Updated tooling free installation solution
- Unique silent TF 120 double-blade fan
- Upgraded anti-explosion rubber tube

Intel: LGA2011-v3/2011/1366/1156/1155/1151/1150
AMD: AM4/FM2+/FM2/FM1/AM3+/AM3/AM2+/AM2



MAELSTROM 240

- Closed impeller & ceramic bearing pump
- Copper block with 0.2mm microchannel
- Dual FDB rubber fans with PWM function
- 240mm radiator with Aluminum fins & Fan hub
- Patented detachable fan & LED breathing light

Intel: LGA2011-v3/2011/1366/1156/1155/1151/1150
AMD: AM4/FM2+/FM2/FM1/AM3+/AM3/AM2+/AM2



MAELSTROM 240 T

- Closed impeller & Long lifetime ceramic bearing
- 0.2mm high-density water micro channel & copper block
- Dual 120mm PWM fan with blue & red LED Light
- Equipped high-quality EPDM rubber tube
- Patented detachable fan & Bionic LED breathing light

Intel: LGA2011-v3/2011/1366/1156/1155/1151/1150
AMD: AM4/FM2+/FM2/FM1/AM3+/AM3/AM2+/AM2



MAELSTROM 120

- Closed impeller & ceramic bearing pump
- Copper block with 0.2mm microchannel
- 120mm FDB rubber-covered PWM fan
- High performance aluminum radiator
- Patented detachable fan & LED breathing light

Intel: LGA2011-v3/2011/1366/1156/1155/1151/1150
AMD: AM4/FM2+/FM2/FM1/AM3+/AM3/AM2+/AM2



MAELSTROM 120K

- Closed impeller & ceramic bearing pump
- Copper block with 0.2mm microchannel
- Unique 20mm thickness PWM fan
- Φ120 mm×27mm Aluminum radiator
- Bionic LED breathing light

Intel: LGA2011-v3/2011/1366/1156/1155/1151/1150
AMD: AM4/FM2+/FM2/FM1/AM3+/AM3/AM2+/AM2

ASSASSIN II

The new generation of ASSASSIN II has preserved key features from ASSASSIN of great heat dissipation performance: Nickel-plated heatsink, 8 high-performance heatpipes, and mirror finished copper base. In addition, ASSASSIN II has some upgrade parts that compared with ASSASSIN, it offers asymmetric twin-tower design, and uses new release fan-GF140 for excellent performance-noise ratio. However, breakthrough has been created for its special designed PWM fan with Min.300RPM for extreme silence. ASSASSIN II is designed for new generation CPU thermal requirement.



LUCIFER V2

- Fanless heatsink design with 6 heatpipes
- Support all mainstream cpu sockets
- PWM fan with Min.300RPM for extreme silence
- Mirror Finished Copper Base

Intel: LGA2011-V3/2011/1366/115X/775
AMD: AM4/FM2/FM1/AM3+/AM3/AM2+/AM2



LUCIFER K2

- Fanless heatsink design with 6 heatpipes
- Perfect compatibility with memory slot
- Polished pure copper base
- Silent 20mm Slim Fan with Red impeller & black frame

Intel: LGA2011-v3/LGA2011/LGA1366/LGA1156/LGA1155/LGA1150/LGA775
AMD: AM4/FM2+/FM2/FM1/AM3+/AM3/AM2+/AM2



GABRIEL

- 4 High-Performance Heatpipes
- The full set of heatsink is nickel plated
- 120mm PWM fan with PTFE cable
- Support mainstream Mini ITX processors

Intel: LGA1156/1155/1150
AMD: AM4/FM2/FM1/AM3+/AM3/AM2+/AM2



NEPTWIN V2

- 6 U-shape heatpipes
- Twin-tower heatsinks give superb performance
- Dual 120mm LED Fans With PWM Function
- Mirror Polished Copper Base

Intel: LGA2011-V3/LGA2011/1366/115X/775
AMD: AM4/FM2/FM1/AM3+/AM3/AM2+/AM2



GAMMAXX 400

- 4 Heatpipes heatsink with CTT
- 120x120x25mm PWM Fan with Blue or Red LED
- Easy installation design

Intel: LGA2011-v3/2011/1366/115X/775
AMD: AM4/FM2+/FM2/FM1/AM3+/AM3/AM2+/AM2



NEPTWIN WHITE

- 6 U-shape heatpipes
- Twin-tower heatsinks give superb performance
- Dual 120mm LED Fans With PWM Function
- Mirror Polished Copper Base

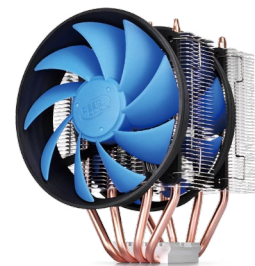
Intel: LGA2011-V3/LGA2011/1366/115X/775
AMD: AM4/FM2/FM1/AM3+/AM3/AM2+/AM2



GAMMAXX 400 WHITE

- 4 Heatpipes heatsink with CTT
- 120x120x25mm PWM Fan with White LED
- Easy installation design

Intel: LGA2011-v3/2011/1366/115X/775
AMD: AM4/FM2+/FM2/FM1/AM3+/AM3/AM2+/AM2



FROSTWIN V2.0

- 4 U-shape heatpipes
- Twin-tower heatsink with CTT
- Dual 120mm Fans with PWM Function

Intel: LGA2011/1366/1156/1155/1150/775
AMD: AM4/FM2/FM1/AM3+/AM3/AM2+/AM2



GAMMAXX 300

- 3 heatpipes heatsink with CTT
- Ø120x25mm Fan with PWM Function
- Easy installation design
- High performance up to 130W

Intel: LGA1366/1156/1155/1150/775
AMD: AM4/FM2+/FM2/FM1/AM3+/AM3/AM2+/AM2



GAMMAXX 200

- 2 heatpipes heatsink with CTT
- 92x92x25mm fan with PWM function
- Easy installation design
- High performance up to 95W

Intel: LGA1156/1155/1150/775
AMD: AM4/FM2/FM1/AM3+/AM3/AM2+/AM2



GAMMAXX 200 T

- 2 heatpipes heatsink with CTT
- Φ120x25mm fan with PWM function
- Easy installation design

Intel: LGA1156/1155/1150/1151/775
AMD: AM4/FM2/FM1/AM3+/AM3/AM2+/AM2



GAMMAXX S40

- 4 Φ6mm heatpipes with CTT
- Φ120x25mm fan with PWM function
- Double Airflow Channel(D.A.C.) technology
- The whole heatsink set is nickel plated
- De-vibration design

Intel: LGA2011-v3/2011/1366/115X/775
AMD: AM4/FM2+/FM2/FM1/AM3+/AM3/AM2+/AM2



ICE BLADE PRO V2.0

- 4 Φ8mm heatpipes with CTT
- 120mm fan with PWM function
- Intelligent Side Flow Design
- Big surface of aluminum fins design

Intel: LGA2011/1366/1156/1155/1150/775
AMD: AM4/FM2/FM1/AM3+/AM3/AM2+/AM2



ICE BLADE 200M

- Dual Φ8mm Heatpipes & CTT
- Dual 92mm Fans with PWM Function
- Mounting kits for all main stream sockets

Intel: LGA2011/1366/1156/1155/1150/775
AMD: AM4/FM2/FM1/AM3+/AM3/AM2+/AM2



ICE BLADE 100

- Innovative Ø8mm heatpipe with CTT
- 92mm fan with de-vibration design
- Up to 95W TDP solution

Intel: LGA1156/1155/1150/775
AMD: AM4/FM2/FM1/AM3+/AM3/AM2+/AM2



ICE EDGE MINI FS V2.0

- 2 heatpipes with CTT
- 80mm TPE Cover fan
- TPE Cover absorbs vibrations

Intel: LGA1156/1155/1150/775

AMD: AM4/FM2/FM1/AM3+/AM3/AM2+/AM2



GAMMA ARCHER

- High quality aluminum extrusion
- 120mm big airflow fan
- Unique fan frame design

Intel: LGA1156/1155/1150/775

AMD: AM4/FM2/FM1/AM3+/AM3/AM2+/AM2



HTPC-200

- 2 Sintered Powder Heatpipes
- 47mm ultra-thin
- Compatible with HTPC Case & ITX motherboard
- Ø80mm×15mm fan with PWM function

Intel: LGA1156/1155/1150/775

AMD: AM4/FM2+/FM2/FM1/AM3+/AM3/AM2+/AM2



CK-11508

- Quality heatsink with high-efficiency 92mm fan
- Safe installation with screw and back plate

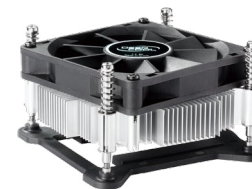
Intel: LGA1156/1155/1150



CK-77502

- Ideal thermal solution for Intel LGA775
- Radial heatsink with high-efficiency 92mm fan
- Safe installation with screw and back plate

Intel: LGA775



HTPC-11

- Especially designed for HTPC system
- Only 37mm high after installation
- High quality aluminum extrusion

Intel: LGA1156/1155/1150



CK-11509

- Ø92x25mm upside-down fan
- Radial aluminum heatsink
- Simple and easy installation with push pins

Intel: LGA1155/1150/775



CK-AM209

- Ideal AMD solution for medium/small system integrator
- High performance fan with big air pressure
- Spring clip and easy to install

AMD: AM4/FM2/FM1/AM3+/AM3/AM2+/AM2



ALTA 10

- Copper core provides excellent heat transfer
- Radial heatsink with high-efficiency 92mm fan
- Easy installation with push-pins

Intel: LGA1156/1155/1150/775



ALTA 9

- Ideal thermal solution for Intel LGA775/LGA115X
- Radial heatsink with high-efficiency 92mm fan
- Easy installation with push pins

Intel: LGA1156/1155/1150/775



ALTA 7

- Patented $\Phi 92 \times 32$ mm upside-down fan
- Aluminum heatsink dissipates heat efficiently
- Easy installation with push pins

Intel: LGA1156/1155/1150/775



BETA 40

- Patented $\Phi 92 \times 32$ mm upside-down fan
- Aluminum heatsink with copper insertion
- Mirror polished base provides perfect contact

AMD: AM4/FM2/FM1/AM3+/AM3/AM2+/AM2



BETA 11

- Patented $\Phi 92 \times 32$ mm upside-down fan
- Thicker anodized black heatsink

AMD: AM4/FM2/FM1/AM3+/AM3/AM2+/AM2



BETA 10

- Patented $\Phi 92 \times 32$ mm PWM upside-down fan
- Aluminum heatsink
- Mirror polished base

AMD: AM4/FM2/FM1/AM3+/AM3/AM2+/AM2



THETA 31 PWM

- Radial aluminum heatsink with copper insertion
- $\Phi 100 \times 25$ mm fan with PWM function
- Safe installation with screw and back plate

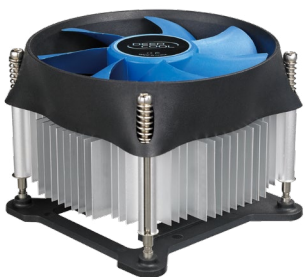
Intel: LGA1156/1155/1150



THETA 21/21 PWM

- $\Phi 92 \times 25$ mm fan with PWM function
- Radial aluminum heatsink
- Easy installation with push-pin clips

Intel: LGA1156/1155/1150



TEHTA 20/20 PWM

- $\Phi 100 \times 25$ mm fan with PWM function
- Radial aluminum heatsink
- Safe installation with screw and back plate

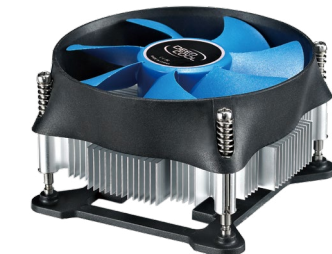
Intel: LGA1156/1155/1150



THETA 16/16 PWM

- $\Phi 92 \times 25$ mm fan with PWM function
- Sunflower aluminum heatsink
- Easy installation with push-pin clips

Intel: LGA1156/1155/1150



THETA 15/15 PWM

- Low profile cooling solution
- $\Phi 100 \times 25$ mm fan with PWM function
- Safe installation with screw and back plate

Intel: LGA1156/1155/1150



THETA 9/9 PWM

- Low profile heatsink easily fits into SFF cases
- $\Phi 92 \times 25$ mm fan with PWM function
- Radial aluminum heatsink
- Easy installation with push-pin clips

Intel: LGA1156/1155/1150



Genome II

Genome II – Never Ending Innovation



GENOME ROG CERTIFIED EDITION

- AM4 Ready, ATX Computer Case
- Pre-installed extreme liquid cooling system
- RGB lighting system, uniform color controlled by one remote controller
- RGB lighting system includes: water block, reservoir, PSU Shroud, LED Strip
- 360mm radiator, 3 PWM fans and a reservoir with helix
- Extra slots for vertical GPU installation

GENOME II

- AM4 Ready, ATX Computer Case
- Pre-installed extreme liquid cooling system
- 360mm radiator, 3 PWM fans and a reservoir with helix
- Bigger side window & wider space design
- Exquisite structure & particular design
- Extra slots for vertical GPU installation
- Extra extended window supports longest GPU

DUKASE LIQUID

- AM4 Ready, ATX Computer Case
- Pre-installed extreme liquid cooling system
- Integrated red LED lighting system
- Light sources: flow indicator, water block, LED light panel, and LED strips
- Fluid flow is visible with specially designed flow indicator
- 240mm radiator with 2 PWM fans



TRISTELLAR

- MINI-ITX Computer Case
- 3 independent cabins for Motherboard, GPU and PSU
- Solid metal frame and full aluminum shells
- Individual air duct system
- Support the latest gaming configuration
- Surprisingly Aesthetic Functionality
- Support water cooling system installation



TRISTELLAR SW

- MINI-ITX Computer Case
- 3 independent cabins for Motherboard, GPU and PSU
- Solid metal frame and full aluminum shells
- Individual air duct system
- Amazing side window design offers a perfect GPU visible
- Surprisingly Aesthetic Functionality
- Support water cooling system installation



DUKASE V2

- Special suspension style design of top panel
- Fan speed controller on the top can adjust 3 fans
- The ODD free metal front panel design
- Amazing side window ensures a perfect visible effect
- Wider space offers a better cable management
- Exquisite structure & optimized design



DUKASE V3

- Special suspension style design of top panel
- Fan speed controller on the top can adjust 3 fans
- The ODD free metal front panel design
- Amazing side window ensures a perfect visible effect
- Wider space offers a better cable management
- Exquisite structure & optimized design
- Two pre-installed case fans



KENDOMEN

- Support 240mm radiator installation at top
- Fan-speed adjusting switch(2 fan supported)
- Quick-move design of the top/front panel
- Tool free installation design for ODD/HDD
- Cable management supported
- With side-window
- Fan Speed Switch with 2 working status



WAVE V2

- Classic MICRO ATX computer case with cool-looking front panel
- Optimized Airflow Design & Cooling System
- Fully black painted interior with 0.5mm panel thickness
- Support 320mm (MAX) long VGA Card installation
- One USB 3.0 + two USB 2.0 Ports
- Support cable management



FRAME

- MICRO ATX computer case with metal-looking appearance
- Optimized Airflow Design & Cooling System
- Fully black painted interior with 0.5mm panel thickness
- Support 320mm (MAX) long VGA Card installation
- 1*USB 3.0, 2*USB 2.0 Ports, 1*Card-reader (TF/SD)
- Support cable management



D-SHIELD

- ATX computer case with metal-looking appearance
- Optimized Airflow Design & Cooling System
- One USB 3.0 + two USB 2.0 Ports
- Fully black painted interior with 0.6mm panel thickness
- Support 350mm (MAX) long VGA Card installation
- 2 x 120mm fan mounting positions on PSU shroud



TESSERACT SW-RD

- Bigger side window makes it more fashionable and shining
- Pre-installed 2pcs Red LED fans for maximum cooling
- Fully black painted interior
- Patented air intake channel of the front panel
- Rail slide HDD design for HDD easy installation
- 2 water cooling grommets on the rear
- Support cable management



TESSERACT SW-BK

- With visible side-window
- Fully black painted interior
- Pre-installed 2 Blue LED fans
- Patented air intake channel of the front panel
- Rail slide HDD design for HDD easy installation
- 2 water cooling grommets on the rear
- Cable management supported



TESSERACT BF

- Fully black painted interior
- Patented air intake channel of the front panel
- Rail slide HDD design for HDD easy installation
- Tool free installation design for ODD/HDD
- High quality rubberized coating for aesthetics
- 2 water cooling grommets on the rear



TESSERACT SW-WH

- With visible side-window
- Fully black painted interior
- Pre-installed 1 Blue LED fan
- Patented air intake channel of the front panel
- Rail slide HDD design for HDD easy installation
- 2 water cooling grommets on the rear
- Cable management supported



TESSERACT WH

- Fully black painted interior
- Patented air intake channel of the front panel
- Fully metal mesh design for the most cooling
- Rail slide HDD design for HDD easy installation
- Tool free installation design for ODD/HDD
- 2 water cooling grommets on the rear
- Cable management supported



SMARTER

- Classic Micro ATX case with simple panel design
- 1*USB 3.0 +1* USB 2.0 Ports
- Fully black painted interior
- Support cable management



SMARTER LED

- Classic Micro ATX case with simple panel design
- 1*USB 3.0 +1* USB 2.0 Ports
- Pre-installed 2pcs Blue LED fan
- Fully black painted interior
- Support cable management

DQ1050M

Compliant Intel ATX12V v 2.31.
80 PLUS® GOLD certified.
DC to DC design.
100% Fully Modularized longer flat cable.
120mm silent fan with temperature control function.
Double-Layer EMI Filter.
Intelligentized eco-friendly chipset.
CircuitShield™ —OVP, UVP, SCP, OPP.
Supports Multi-Way SLI / CrossFire + Multi-Core CPUs.
High reliability with an MTBF of at least 120,000 hours of use.



DQ850M

- Compliant Intel ATX12V v 2.31
- 80 PLUS® GOLD certified
- DC to DC design
- 100% Fully Modularized longer flat cable
- 120mm silent fan with temperature control function
- Double-Layer EMI Filter
- Intelligentized eco-friendly chipset
- CircuitShield™ —OVP, UVP, SCP, OPP
- Supports Multi-Way SLI / CrossFire + Multi-Core CPUs
- High reliability with an MTBF of at least 120,000 hours of use

DQ650M

- Compliant Intel ATX12V v 2.31
- 80 PLUS® GOLD certified
- DC to DC design
- 100% Fully Modularized longer flat cable
- 120mm silent fan with temperature control function
- Double-Layer EMI Filter
- Intelligentized eco-friendly chipset
- CircuitShield™ —OVP, UVP, SCP, OPP
- Supports Multi-Way SLI / CrossFire + Multi-Core CPUs
- High reliability with an MTBF of at least 120,000 hours of use

DQ550M

- Compliant Intel ATX12V v 2.31
- 80 PLUS® GOLD certified
- DC to DC design
- 100% Fully Modularized longer flat cable
- 120mm silent fan with temperature control function
- Double-Layer EMI Filter
- Intelligentized eco-friendly chipset
- CircuitShield™ —OVP, UVP, SCP, OPP
- Supports Multi-Way SLI / CrossFire + Multi-Core CPUs
- High reliability with an MTBF of at least 120,000 hours of use



DQ750 ST

- 80 PLUS® GOLD certified
- Compliant Intel ATX12V v 2.31
- 120mm FDB Bearing PWM fan
- The longer flat cable
- Double-Layer EMI Filter
- Compliant Erp standard
- CircuitShield™ —OVP, UVP, SCP, OPP
- Compliant Multi-Way SLI / CrossFire



DQ650 ST

- 80 PLUS® GOLD certified
- Compliant Intel ATX12V v 2.31
- 120mm FDB Bearing PWM fan
- The longer flat cable
- Double-Layer EMI Filter
- Compliant Erp standard
- CircuitShield™ —OVP, UVP, SCP, OPP
- Compliant Multi-Way SLI / CrossFire



DQ550 ST

- 80 PLUS® GOLD certified
- Compliant Intel ATX12V v 2.31
- 120mm FDB Bearing PWM fan
- The longer flat cable
- Double-Layer EMI Filter
- Compliant Erp standard
- CircuitShield™ — OVP, UVP, SCP, OPP
- Compliant Multi-Way SLI / CrossFire



DA700

- 80 PLUS® Bronze certified
- Compliant Intel ATX12V v 2.31
- Active PFC+ PWM Combo Controller exchange
- 120mm silent fan with temperature control function
- Supports cable management
- Double-Layer EMI Filter
- Intelligentized eco-friendly chipset
- CircuitShield™ —OVP, UVP, SCP, OPP
- Supports Multi-Way SLI / CrossFire + Multi-Core CPUs
- High reliability with an MTBF of at least 100,000 hours of use
- DC to DC design



DA650

- 80 PLUS® Bronze certified
- Compliant Intel ATX12V v 2.31
- Powerful Single 12V Power Rail
- 120mm silent fan with PWM function
- Supports cable management
- Double-Layer EMI Filter
- Compliant Erp standard
- CircuitShield™ —OVP, UVP, SCP, OPP
- Supports Multi-Way SLI / CrossFire
- MTBF of at least 120,000 hours of use



DA600

- 80 PLUS® Bronze certified
- Compliant Intel ATX12V v 2.31
- Powerful Single 12V Power Rail
- 120mm silent fan with PWM function
- Supports cable management
- Double-Layer EMI Filter
- Compliant Erp standard
- CircuitShield™ —OVP, UVP, SCP, OPP
- Supports Multi-Way SLI / CrossFire
- MTBF of at least 120,000 hours of use



DA600-M (Model No. DA600)

- 80 PLUS® Bronze certified
- 100% Full Modular
- Compliant Intel ATX12V v 2.31
- 120mm silent fan with PWM function
- Longer black flat cable
- Double-Layer EMI Filter
- Compliant Erp standard
- CircuitShield™ —OVP, UVP, SCP, OPP
- Supports Multi-Way SLI / CrossFire



DA550

- 80 PLUS® Bronze certified
- Compliant Intel ATX12V v 2.31
- Powerful Single 12V Power Rail
- 120mm silent fan with PWM function
- Supports cable management
- Double-Layer EMI Filter
- Compliant Erp standard
- CircuitShield™ —OVP, UVP, SCP, OPP
- Supports Multi-Way SLI / CrossFire
- MTBF of at least 120,000 hours of use



DA500

- 80 PLUS® Bronze certified
- Compliant Intel ATX12V v 2.31
- Powerful Single 12V Power Rail
- 120mm silent fan with PWM function
- Supports cable management
- Double-Layer EMI Filter
- Compliant Erp standard
- CircuitShield™ —OVP, UVP, SCP, OPP
- Supports Multi-Way SLI / CrossFire
- MTBF of at least 120,000 hours of use



DA500-M (Model No. DA500)

- 80 PLUS® Bronze certified
- 100% Full Modular
- Compliant Intel ATX12V v 2.31
- 120mm silent fan with PWM function
- Longer black flat cable
- Double-Layer EMI Filter
- Compliant Erp standard
- CircuitShield™ —OVP, UVP, SCP, OPP
- Supports Multi-Way SLI / CrossFire



DN500 new version

- 80 PLUS® 230V EU certified
- Up to 85% efficiency
- Compliant Intel ATX12V v 2.31
- 120mm silent fan with PWM function
- The longer cable design
- Double-Layer EMI Filter
- CircuitShield™ —OVP, UVP, SCP, OPP
- Supports Multi-Way SLI / CrossFire



DN400 new version

- 80 PLUS® 230V EU certified
- Up to 85% efficiency
- Compliant Intel ATX12V v 2.31
- 120mm silent fan with PWM function
- The longer cable design
- Double-Layer EMI Filter
- CircuitShield™ —OVP, UVP, SCP, OPP
- Supports Multi-Way SLI / CrossFire



DE580

- Compliant Intel ATX 12V V2.31
- 120mm silent fan with PWM function
- CircuitShield™ — OVP, UVP, SCP, OPP
- The longer cable supports cable management
- MTBF of at least 100,000 hours of use
- High cost-performance



DE530

- Compliant Intel ATX 12V V2.31
- 120mm silent fan with PWM function
- CircuitShield™ — OVP, UVP, SCP, OPP
- The longer cable supports cable management
- MTBF of at least 100,000 hours of use
- High cost-performance



DE480

- Compliant Intel ATX 12V V2.31
- 120mm silent fan with PWM function
- CircuitShield™ — OVP, UVP, SCP, OPP
- The longer cable supports cable management
- MTBF of at least 100,000 hours of use
- High cost-performance



DE430

- Compliant Intel ATX 12V V2.31
- 120mm silent fan with PWM function
- CircuitShield™ — OVP, UVP, SCP, OPP
- The longer cable supports cable management
- MTBF of at least 100,000 hours of use
- High cost-performance



DE380

- Compliant Intel ATX 12V V2.31
- 120mm silent fan with PWM function
- CircuitShield™ — OVP, UVP, SCP, OPP
- The longer cable supports cable management
- MTBF of at least 100,000 hours of use
- High cost-performance



N9 EX

100% Pure Aluminum Panel, Dual Fans & 8 Viewing Angles.
Elaborate combination of unique aluminum panel with shape of wave, and scientific channel design for powerful airflow make N9 EX in high quality .more than looking stable and reliable.



U HUB

- For Notebook Cooling up to 15.6"
- Aluminum panel , ergonomics using angle
- Four USB 3.0 output and one USB 3.0 input
- Anti-slip design
- One USB3.0 input port and four USB3.0 output ports



M6 FS

- 14cm fan for optimal airflow to cool your gaming notebook
- USB HUB function with 1 USB input port and 3 output ports for your additional USB devices
- Stunning gaming-theme design perfectly caters to the needs of gamers
- Ergonomic viewing angle largely eases your spine strain



M5 FS

- Sleek design with shinning material finish
- 180mm blue LED fan assures cooling performance
- Fan speed can be adjusted for performance or silence
- 2 USB ports make it easy to connect additional USB device



MULTI CORE X8

- For Notebook Cooling up to 17"
- Four 100mm fans
- Anti-Slip design
- Pure aluminum panel
- Two USB ports



MULTI CORE X6

- For Notebook Cooling up to 15.6"
- Four fans: 2x140mm & 2x100mm
- Metal mesh panel
- Two USB ports
- Four working models



U PAL

- For Notebook cooling up to 15.6' Notebook
- USB 3.0 supported & pass through cable
- Multi-Angle adjustable
- Metal Mesh Panel
- Dual 140mm fans



N9/N9 BLACK

- For Notebook Cooling up to 17"
- Big 180mm fan
- Five angles adjustable
- Pure aluminum extrusion panel
- Four USB output ports
- Anti-slip buckle
- Fan speed adjustable



N8 ULTRA/N8 ULTRA BLACK

- For Notebook Cooling up to 17"
- Two 140mm Fans
- Pure aluminum extrusion panel
- Four USB ports
- Vertical airflow design



N8/N8 BLACK

- For Notebook Cooling up to 17"
- Two 140mm Fans
- Pure aluminum extrusion panel
- Four USB ports
- Superb cooling performance



N6000

- For Notebook Cooling up to 17"
- Honeycomb metal mesh panel
- 200mm blue LED fan
- Two USB Ports
- Storage cage



N360 FS BLACK

- For Notebook Cooling up to 17"
- Pure aluminum panel
- Two viewing angles adjustable
- Two USB ports
- Fan speed adjustable
- Anti-slip rubber



N180 FS

- For Notebook Cooling up to 17"
- Fully covered metal mesh panel
- USB Pass-through connector
- Two viewing angles available
- Anti-slip buckle



N400

- For Notebook Cooling up to 15.6"
- One 140mm fan
- USB Pass-through connector
- Metal mesh panel
- Anti-slip bar



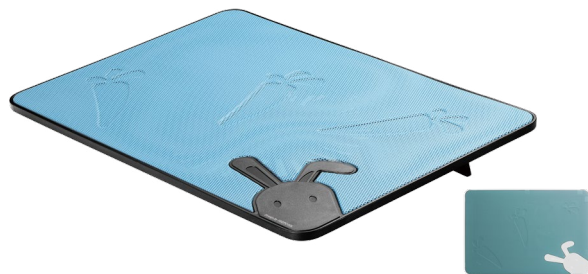
N280

- For Notebook Cooling up to 15.6"
- One 140mm fan
- Fully covered metal mesh
- USB pass-through connector
- Superb cooling performance



N200

- For Notebook Cooling up to 15.6"
- Aluminum extrusion panel
- One 120mm fan
- Anti-slip bar
- USB pass-through connector



N2/N2 WHITE

- For Notebook Cooling up to 17"
- Big 180mm fan
- Fully covered metal mesh panel
- Super slim & portable
- Two USB ports
- Kawaii style
- Anti-slip rubber



N1 ○ ● ● ● ● ● ● ●

- For Notebook Cooling up to 15.6"
- Big 180mm fan
- Fully covered metal mesh panel
- Super slim & portable
- Fan speed adjustable
- USB Pass-through connector
- Anti-slip rubber



N17 ○ ● ● ● ● ● ● ●

- For Notebook Cooling up to 14"
- One 140mm fan
- Fully covered metal mesh panel
- Super slim & portable
- USB Pass-through connector



N19

- For Notebook Cooling up to 14"
- One 140mm fan
- Fully covered metal mesh panel
- Super slim & portable
- USB Pass-through connector



N2200

- For Notebook Cooling up to 15.6"
- Dual 140mm Fans
- Big metal mesh panel
- Two USB ports
- Anti-slip bar



N2000 IV

- For Notebook Cooling up to 15.6"
- Dual 140mm Fans
- Big metal mesh panel
- Dual USB ports and power control
- Anti-slip rubber
- Steel pipe, fashionable looking



WIND PAL

- For Notebook Cooling up to 17"
- Big metal mesh panel & Dual 140mm Fans
- Fan speed adjustable
- Two viewing angles available
- Super slim & portable
- Four USB ports & Anti-slip buckle

WIND PAL FS

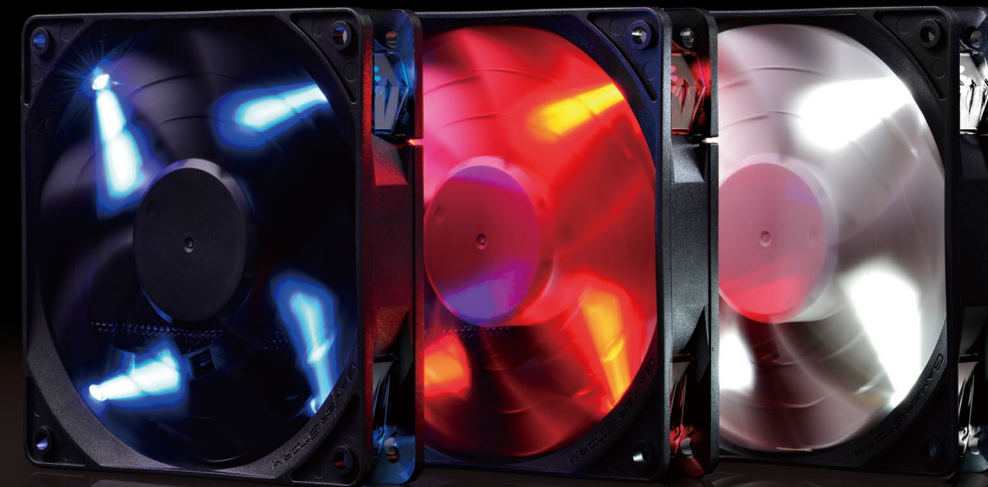
- For Notebook Cooling up to 17"
- Big metal mesh panel & Dual 140mm Fans
- Fan speed adjustable
- Two viewing angles available
- Super slim & portable
- Two USB ports & Anti-slip buckle

WIND PAL MINI

- For Notebook Cooling up to 15.6"
- Big metal mesh panel
- 140mm Blue LED Fan & two viewing angles
- Super slim & portable
- USB Pass-through Connector

E-DESK

- For Notebook Cooling up to 18.4"
- Built-in 200mm fan
- Metal Mesh Panel
- Foldable to save space



TF120

Unique patented 2-layer blade design shows an amazing visual feeling to tune in well with wavy LED light.

Double Functions: the unique blade configuration to offer a powerful air pressure; the scientific channelized frame to reduce the noise arised by the whirlpool of airflow.

Double Performance: Semi-hermetic Fluid Dynamic Bearing solution to power MTBF up to 100,000 hours; Avoid electromagnetic sound & reduce the noise arised by mechanism friction.

DIY Solition: the detachable blade to give more color choice built-in 3-proof functions(Dustproof, Waterproof, Oil-leakage proof).



GF140 FDB VERSION

- FDB Bearing & Silent IC Fan
- Patented De-Vibration TPE Cover
- Optimized Airflow with Centralized Flow Design
- Detachable Fan & DIY Style
- Triple-Proof Design & 100,000 Hours of Lifespan
- PWM Function for Speed-Silence Balance



GF140

- De-Vibration TPE Cover
- Dynamic Balance with a Brass Bearing Stand
- Optimized Airflow with AACC Technology
- 4-pin PWM connector & Four rubber buckles
- PTFE fan cable



GF120

- Fluid Dynamic Bearing & Silent IC Fan
- Patented Design 100%De-Vibration TPE Cover
- Optimized Airflow with Centralized Flow Design
- Detachable Fan & DIY Style
- Triple-Proof Design & 100,000 Hours of Lifespan
- PWM Function for Speed-Silence Balance



GS120

- 20mm thickness
- 4-pin PWM connector & Four rubber buckles
- PTFE fan cable
- Two rubber cable ties



UF140

- For Computer Case Cooling
- Patented rubber de-vibration material
- Super silent design
- Adapter for Mainboard and PSU



UF80

- For Computer Case Cooling
- Patented rubber de-vibration material
- Super silent design
- Adapter for Mainboard and PSU



ICE BLADE FAN

- For Computer Case Cooling
- For Power Supply Cooling
- Four Blue LED
- PWM Function
- Y-shape Cable for 2-fan Installation



WIND BLADE 120

- For Computer Case Cooling
- For Power Supply Cooling
- Semi-black fan frame & impeller
- LED color options: red/white/blue
- Small 3-pin & Molex connector



XFAN 80L

- For Computer Case Cooling
- Clear PC fan frame & impeller
- Small 3-pin & Molex connector
- With colorful LED: Blue/Yellow/Red/Green



XFAN 120L

- For Computer Case Cooling
- Clear PC fan frame & impeller
- Small 3-pin & Molex connector
- With colorful LED: Yellow,Blue,White,Red



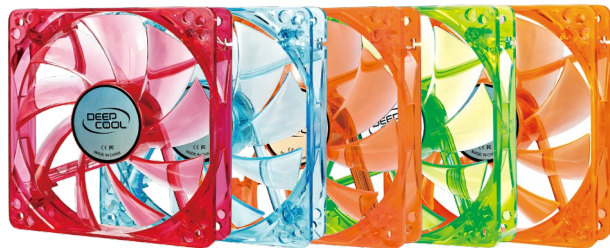
XFAN 200

- High airflow and pressure to offer a perfect inner cooling for case
- Unique blade for a lower noise level & long lifetime bearing
- Rubber de-vibration design
- Amazing LED light available
- Offer both power solutions for 3-pin&4-pin cable



XFAN 120/80/70/60/40

- High quality black material fan structure
- Low speed RPM to ensure quiet operation



XFAN 120U

- For Computer Case Cooling
- High quality UV material
- With colorful LED:
Red/Red Blue/Blue Orange/Yellow Orange/Green Green/Blue



XFAN 80U

- For Computer Case Cooling
- High quality UV material
- With colorful LED:
Red/Red Orange/Green Green/Blue Blue/Green



M-DESK F2

M-DESK F2 is designed for both desktop and laptop users to provide a better viewing angle for the most comfortable usage.



RGB 380

- Multi-color changing effects can be achieved simultaneously and continuously
- 360°Omni- directional radio frequency remote control
- 15 meters ultra remote control
- Touch control with high sensitivity
- Over 200 kinds of routines of colorful light effects
- Can be series connected



RGB 360

- Fixed by magnet, suitable for iron surface only
- 360°Omni- directional radio frequency remote control
- 10 meters ultra remote control
- Touch control with high sensitivity
- 16.8million colors LED stepless adjustable
- 20 seconds power saving mode automatically for remote controller



RGB 350

- Fixed by magnet, suitable for iron surface only
- Three primary-colors LED, long life (100,000 hours) and high brightness
- Color change, flash-rate adjustment, breathing effect etc
- Can all be controlled by remote-controller, very convenient



RGB 100

- Fixed by magnet, suitable for iron surface only
- Bright enough to light up your whole rig
- Able to be series connected
- Soft and bendable design
- Additional 4 Pin PSU connector
- 50 cm extension cable for you to randomly fix the LED strip



E-PAD PLUS

- Natural rubber surface material
- High-grip base grips the desk stably
- The seamed sides prevents it from fraying effectively
- Pliable and able to be rolled up for easy storage and transport
- Washable and easy to clean
- Massive and durable



V95

- Multi mounting holes
- 10cm fan & aluminum heatsink
- Easy-to-install design
- Compatible with mainstream NVIDIA and ATI VGA cards



V6000

- Multi mounting holes
- Six heatpipes & aluminum heatsink
- Dual 92mm fans with TPE cover fan
- Extra fan clips
- Compatible with mainstream NVIDIA and ATI VGA cards



Fan Hub

- For additional fans installation
- Up to 4 Fans Speed Control
- PWM fans compatible
- Easy to install



V65

- Large aluminum heat dissipation area
- Quiet 50mm fan, silent operation
- Compatible with most VGA cards with 80mm mounting holes
- Easy to install with the push-pin clips



V50

- Very good cooling performance with quiet operation
- Compatible with most VGA cards with 55mm mounting holes
- Easy to install with the push-pin clips



Z3/Z5/Z9

Weight
Color
Viscosity
Operation Temperature
Thermal Conductivity



Rock MAN(PWM)

- Fan Control Panel
- PWM control
- Sound activated LED
- 3.5 drive bay compatibility



Rock MASTER V3.0

- Fan Control Panel
- CF/SD/Micro SD Card Reader
- Dual USB 3.0 Ports
- 5.25" drive bay installation

Z3	Z5	Z9
1.5g	3g	3g
Silver gray	Silver gray	Silver gray
73cps	76cps	89.16cps
-50 ~300℃	-50 ~300℃	-40 ~200℃
>1.134 W/m-K	>1.46W/m-K	>4 W/m-K



ICEDISK 1

- Compatible with all standard 3.5" Hard Disk Drive
- Equipped with 60mm fan to provide better cooling effect
- Easy to install in all standard ATX case



ICEDISK 2

- Compatible with all standard 3.5" Hard Disk Drive
- Dual 60mm fans ensure excellent cooling performance to protect your data storage
- Easy to install in all standard ATX case



ICEDISK 100

- Compatible with all standard 3.5" hard disk drive
- Aluminum case ensures the safety of the hard disk and the aluminum extrusion dissipate heat efficiently
- Patented De-vibration design can reduce HDD operating noise to the minimum



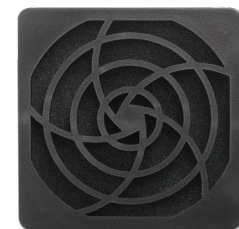
Fan filter A80/A120

- Aluminum material for longlife use
- Keep dust out of your case with this dust filter for 80mm fans



Fan filter 120

- Keep dust out of your case with this dust filter for 80mm fans



Fan filter 80

- Keep dust out of your case with this dust filter for 80mm fans



Buffer psu

- Specially designed rubber buffer to reduce vibration and noise for power supply



Buffer B1/Buffer B2

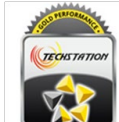
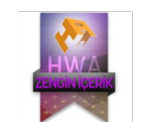
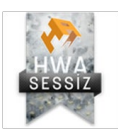
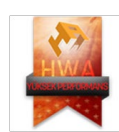
- High quality rubber material.
- Easy to install
- Absorb vibration and reduce noise
- maximally



NBRIDGE 2

- Compatible with mainstream north bridge
- Adding a 40mm fan to the heatsink to achieve better cooling performance
- Flexible clips to ensure wide compatibility

Awards



Marketing Gifts



CABLE TIE



MOUSE PAD



MASK



GIFT PEN



T-SHIRT



BACKPACK



Beijing Deepcool Industries Co., Ltd
Address:No.101-30,Floor 1-4,Building 10, Dijin Road 9, Haidian District.
100095 Beijing, P.R.China
TEL: 86 10 5640 1919
FAX: 86 10 5640 1925

Manufacturing Location
Shenzhen, China

Customer Service and Technical Support Operation hours:
Mon - Fri (GMT 8:00)
09:00 - 12:00, 13:00 - 18:00
Except holidays

Contact us

For distribution, please contact:
sales@deepcool.com
For technical support, please contact:
support@deepcool.com
Facebook: DEEPCOOL
Twitter: Deepcoolglobal
Thank you for contacting DEEPCOOL!